

GRANITE CREEK EAST

LOTS 1 THRU 194 & OUTLOTS "A" THRU "J" INCLUSIVE

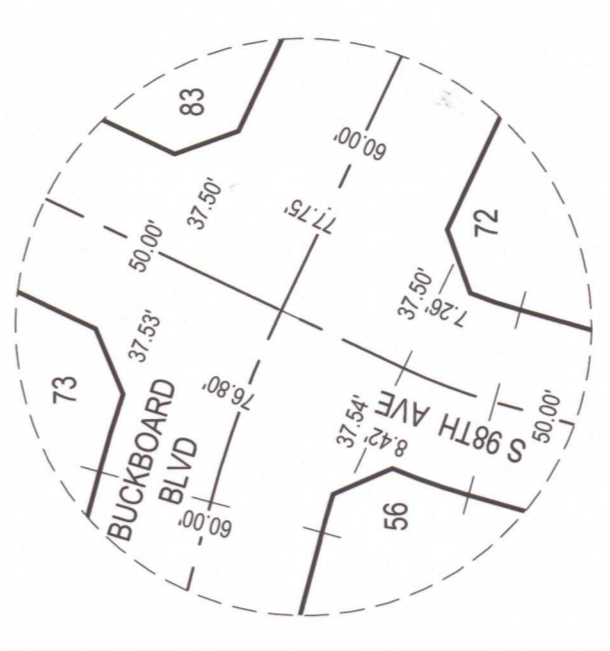
A TRACT OF LAND LOCATED IN PART OF THE SE1/4 OF THE SE1/4 PART OF THE SW1/4 OF THE SE1/4 PART OF THE NW1/4 OF THE SE1/4 AND PART OF THE SE1/4 OF THE SW1/4 OF THE SW1/4 ALL LOCATED IN SECTION 26, TOWNSHIP 14 NORTH, RANGE 12 EAST OF THE 6TH P.M., SARY COUNTY, NEBRASKA



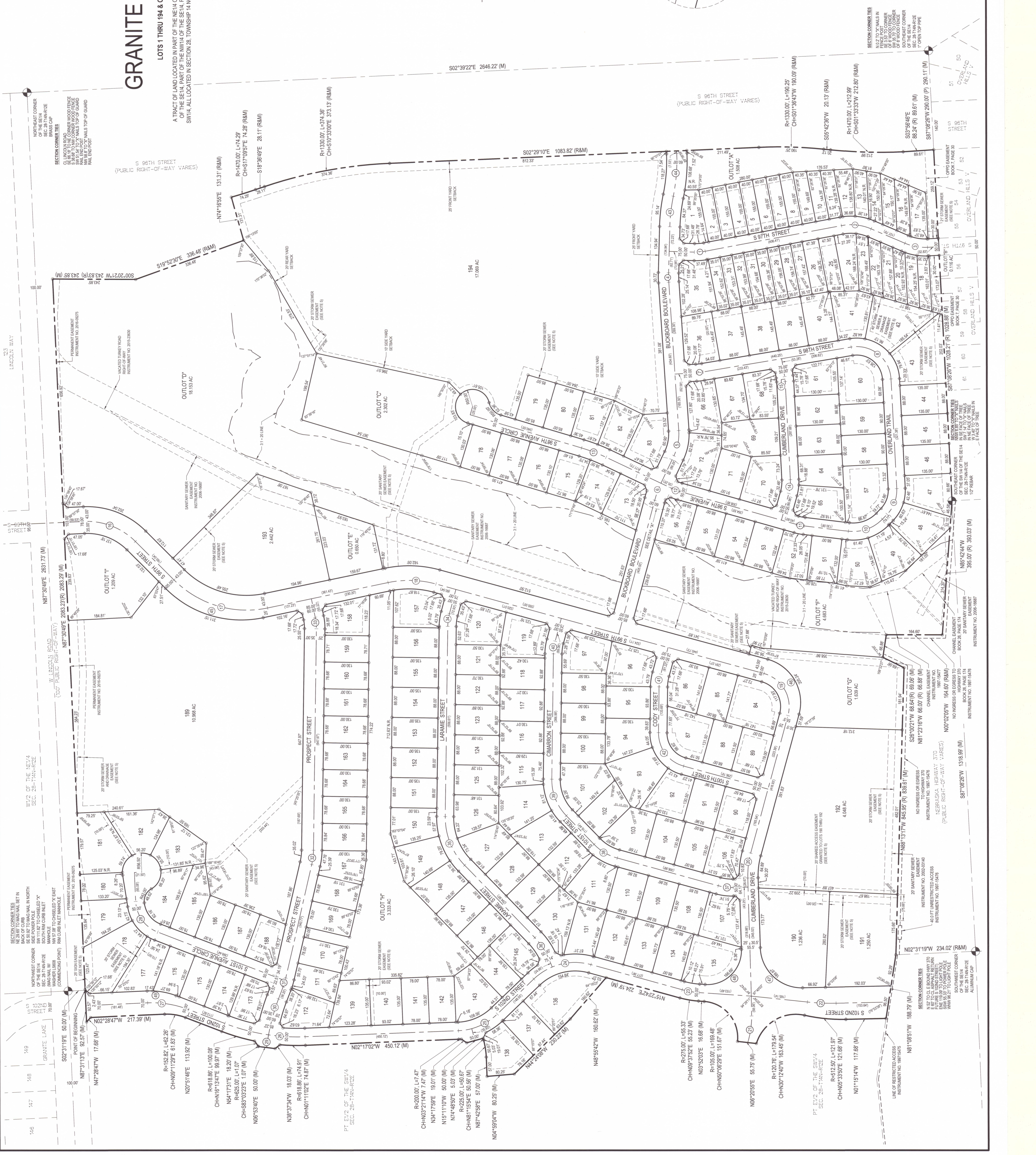
GRANITE CREEK EAST
LOTS 1 THRU 194 & OUTLOTS "A" THRU "J" INCLUSIVE
PAPILLON, NEBRASKA



- ### LEGEND
- MONUMENTS SET FOR PREPAR W/ CAPS (488)
 - BOUNDARY LINE
 - - - - RIGHT OF WAY LINE
 - ▬▬▬ LOT LINE
 - ◉ EASEMENTS
 - ⊙ EXIST SECTION CORNER
 - EXIST SECTION LINES
 - EXIST PROPERTY LINES
 - EXIST EASEMENTS
 - SETBACK LINE
 - (M) MEASURED DISTANCE



DETAIL "A"
(BUCKBOARD BOULEVARD & S 99TH STREET)
SCALE 1" = 20'



2023-09275

146
147
148
149

Plot No.	P2021141.001
Date	10/03/2022
Drawn By	JMS
Scale	1" = 100'
Sheet	1 of 2

